



School Annual Education Report (AER) Cover Letter

January 29, 2020

Dear Parents and Community Members:

We are pleased to present you with the Annual Education Report (AER) which provides key information on the 2018-19 educational progress for the Taylor Prep. The AER addresses the complex reporting information required by federal and state laws. The school's report contains information about student assessment, accountability, and teacher quality. If you have any questions about the AER, please contact the Principal at 313-668-2100 for assistance.

The AER is available for you to review electronically by visiting the following web site <http://bit.ly/2WeeQEP>, or you may review a copy in the main office at your child's school.

For the 2018-19 school year, schools were identified using definitions and labels as required in the Every Student Succeeds Act (ESSA). A Targeted Support and Improvement (TSI) school is one that has at least one underperforming student subgroup. An Additional Targeted Support (ATS) school is one that has three or more underperforming student subgroups. A Comprehensive Support and Improvement (CSI) school is one whose performance is in the lowest 5% of all schools in the state or has a graduation rate at or below 67%. Some schools are not identified with any of these labels. In these cases, no label is given.

** Note TSI and ATS definitions were changed for the 2018-19 school year per federal requirements. The new definitions are:*

- *TSI – The school has at least one subgroup performing in the bottom 25% within each applicable accountability index component.*
- *ATS – The school has met the criteria for TSI identification and has at least one subgroup performing at the same level as a CSI school.*

Our school has **not** been given one of these labels.

Taylor Prep continues to work to address proficiency levels in math and reading. Several initiatives have been put in place in order to meet the needs of students. We have also infused a co-teaching model for all 9th grade math and reading courses. This has allowed two certified teachers to deliver instruction and assist students. We have also implemented concentrated classes; these have fewer students that allow more direct instruction and allow the teacher to target specifically lacking learning skills. We have also increased after school support staff that assist in tutoring. In addition to tutoring, support staff serve the role as academic coaches and target at risk students and monitor their progress. The school has also have infused various hands on technology to make sure math skills are shown as relevant. As Taylor Prep has identified these challenges and have also implemented school wide assistance. Most classes include reading standards that are measured. Taylor Prep has also hired Academic Specialist who worked with academic coaches and students to increase the success of students.

State law requires that we also report additional information.

1. PROCESS FOR ASSIGNING PUPILS TO THE SCHOOL

2018-19

Same as 2017-18 (described below).

2017-2018

Taylor Prep is a state-funded, public school academy. Therefore, there is no cost to attend Taylor Prep. The school is open to any child wishing to attend. Students must be age-appropriate for their respective grade, and they must reside in the state of Michigan.

By law, Taylor Prep cannot restrict enrollment based on selection criteria. Taylor Prep can, however, limit the total number of students who may attend the school. If the number of applications exceeds the number of available openings, a random lottery will determine who attends the school.

Taylor Prep's open enrollment period is from the first day of the current school year until 5:00 p.m. on the last business day of February of the current school year. During this enrollment period, all applications get equal consideration regardless of date submitted. Following the close of open enrollment, if the number of applications does not exceed the number of open seats, all students will receive a notice of acceptance into their respective grades. If applications received exceed offered seats in any grade level, a random selection process will take place for all grade levels. Names are randomly drawn until all offered seats have been filled. Any remaining names are drawn to establish waiting list priority.

Once students are enrolled and remain enrolled, they will remain eligible to be re-enrolled at the school for successive years without having to reenter the random selection process. However; they will be requested to complete a re-enrollment form by the end of the open enrollment period showing intent to re-enroll for the subsequent school year. All applicants on a waiting list must resubmit an application for the following school year during the next open enrollment period.

In order to accommodate parents who have more than one child eligible for enrollment, siblings of accepted and currently enrolled students are given preference over students who have no such siblings. Siblings of currently enrolled students at the school will be drawn first in the random selection process for offered seats. In addition, if a child is selected during the random selection process, that child's sibling will be offered the first available offered seat in his/her respective grade. Though siblings are afforded preference for offered seats, they are not given preference over a child previously enrolled.

Should offered seats remain available after the close of open enrollment, students will be accepted on a first-come, first-served basis until offered seats are no longer available.

Applications are date and time stamped upon submission, and students are admitted in the order their application is received. Applications will be accepted after offered seats are filled and will be placed on a waiting list in the order received.

2. THE STATUS OF THE 3-5 YEAR SCHOOL IMPROVEMENT PLAN

2018-19

Same as 2017-18 (described below)

2018-19

Taylor Prep continues to focus on language usage, reading, and math as goals for school improvement, specifically attempting to increase the number of proficient students as measured by PSAT, SAT, NWEA and school formative assessments. The administration and teachers continue to utilize NWEA assessments three times annually to identify

where students are struggling and to help develop lesson plans to meet the specific needs of students. Professional development has been provided on NWEA and future professional development will be dedicated to analyzing NWEA results and developing lessons and curriculum to meet the needs of students. In conjunction with professional development, the school uses paraprofessionals and academic specialists to work with students with the most need in the building.

3. A BRIEF DESCRIPTION OF EACH SPECIALIZED SCHOOL

2018-19

Same as 2017-18 (described below).

2017-2018

Taylor Preparatory High school was authorized by Grand Valley State University to begin its first year of operation in September of 2013. The school is managed by PrepNet, LLC. Taylor Prep is a full college preparatory high school serving grades 9-10 in 2013-14, growing to grades 9-12 in 2015-16. The PrepNet curriculum used by Taylor Prep is designed to not only prepare students to meet the State of Michigan's High School Content Expectations, but also to meet the rigorous expectations of the College Board's Advanced Placement curricula.

Taylor Prep has built its program based on the following core values:

Rigor: Our graduates will complete AP coursework and earn college acceptance. Our graduates will read well, write clearly and coherently, study effectively, reason soundly, and question thoughtfully. End of term comprehensive exams covering the essential learning in each core subject will determine advancement to the next level. We will give students multiple opportunities to learn and demonstrate their accomplishments.

Relevance: We will lead students toward rigorous learning by posing essential questions and developing knowledge, skills and understanding that can be transferred and applied to realistic tasks and real world settings. We endeavor to bring curiosity, challenge, pleasure, and a sense of accomplishment into our students' lives. Everything taught at our school endeavors to be a life-long skill, whether it be literary, linguistic, athletic, artistic, scientific, mathematical or historical.

Relationships: To succeed in our mission, we need the students' parents' active partnership and agreement with the school mission, which includes a personal commitment to serious academic challenge. Parents will take an active role in their child's education by providing basic needs so their child is ready to learn. By learning values and good work ethics at home, students will be prepared to succeed at school. Mutually respectful and cooperative in school and community, parents and staff will work together with the vision of helping students become productive members of Taylor Preparatory High School and society. Administrators, teachers and counselors will be visible and accessible to students.

Responsibility and Moral Focus: Our curriculum will include service learning opportunities and completion of community service projects. We encourage students to be accountable for their actions, and to be guided by the values of being respectful, truthful and ethical. Students at Taylor Prep understand that learning requires effort and hard work. Through their sense of good values, positive behavior, and moral conscience, they will hold themselves accountable for their actions. Students will have a true sense of direction, with goals and potential college and career paths clearly established. Staff will be competent, compassionate, consistent, considerate, accountable and empowered.

Special School Features: The program of study at Taylor Prep is designed to ensure each graduate:

- Successfully completes a minimum of two AP classes
- Makes successful application to college
- Completes 60 hours of community service

4. IDENTIFY HOW TO ACCESS A COPY OF THE CORE CURRICULUM, A DESCRIPTION OF ITS IMPLEMENTATION, AND AN EXPLANATION OF THE VARIANCES FROM THE STATE'S MODEL

2018-19

Same as 2017-18 (described below).

2017-18

To access a copy of the Taylor Prep standards for graduation, please use the following URL:

<http://taylorprephs.com/academic-life/curriculum/>

To access a copy of the Michigan High School Content Expectations (HSCE), please use the following URL:

http://www.michigan.gov/mde/0,4615,7-140-28753_64839_65510---,00.html

Our goal of preparing students for college success requires us to think beyond the State High School Content Expectations as we develop and then refine our curricula. Our goal is to graduate students who have experienced academic excellence and have acquired the knowledge and skills necessary to be successful in college. Thus, in each core content area, we start with the end in mind: college level work as outlined in the Advanced Placement courses. We then plan backwards, asking ourselves what foundation our students will need to be successful in these college-level courses.

We began developing our curriculum by examining the Michigan High School Content Expectations (HSCE). In each core subject offered at each grade level, HSCE standards are identified, sequenced and targeted for each unit of instruction.

Teachers created their lesson plans to reflect appropriate HSCE in order to maximize learning time and ensure alignment of instruction to the MI framework. All students were expected to reach the HSCE standards; however, accommodations were sometimes necessary to maximize learning opportunities for all students. This support came through classroom differentiation, in-class support services, targeted programmatic resources, out of class intervention, and out of school instructional opportunities—all of which were designed to accelerate student growth trajectory.

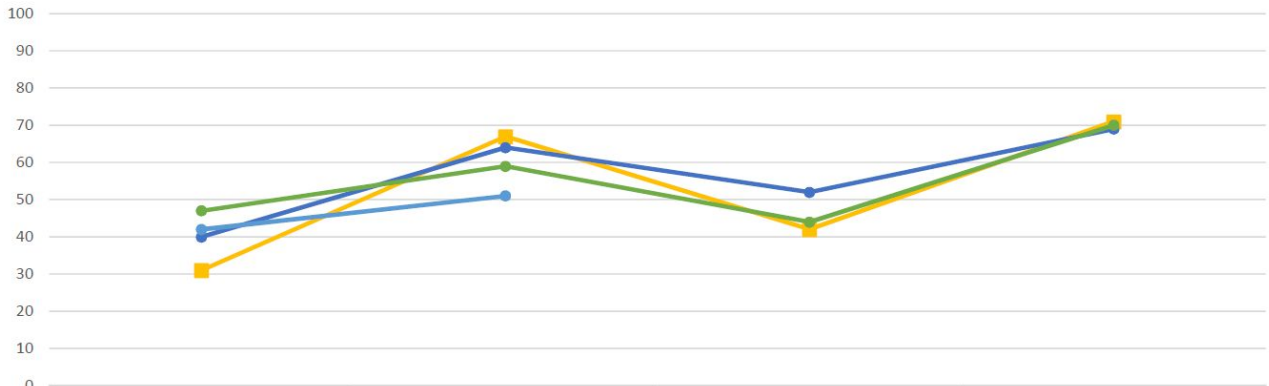
In addition to the MI framework, English classes align instruction with the national College Board Standards for College Success, and all core subjects align instruction with the Advanced Placement Course expectations. We also have integrated a Moral Focus program into our advisory classes and humanities courses. The Moral focus program is designed to support parents' efforts to teach character at home by reinforcing and modeling universal human virtues such as compassion, respect and integrity. Additionally, teachers model behavior that exemplifies the virtue and recognize that behavior in students when they do the same.

5. THE AGGREGATE STUDENT ACHIEVEMENT RESULTS FOR ANY LOCAL COMPETENCY TESTS OR NATIONALLY NORMED ACHIEVEMENT TESTS

Taylor Preparatory High School administers the NWEA MAP assessment three times per year (fall, winter, spring) to all 9th and 10th grade students. The MAP is a computer-adaptive norm-referenced test benchmarked to national grade-level cohorts. The objective of the assessment is to measure cohort baseline proficiency and growth relative to their peers nationally.

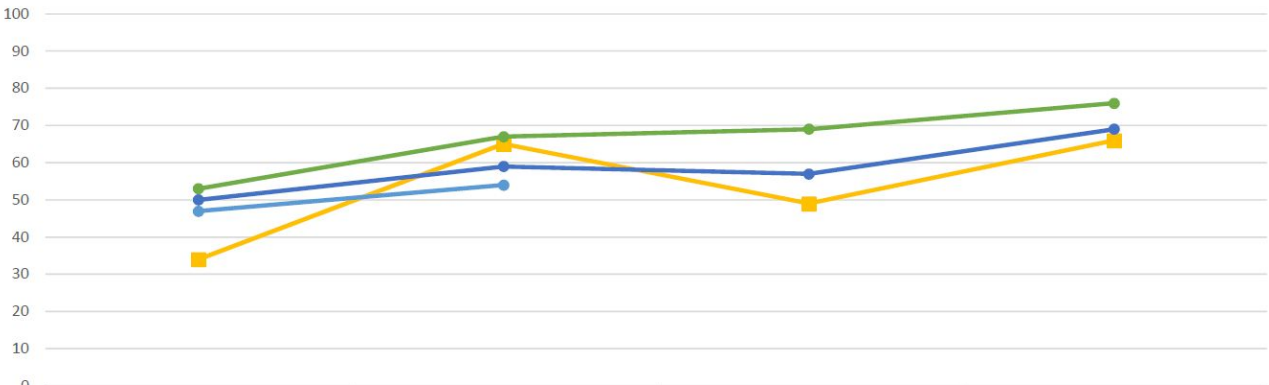
The charts below depict the progress of current and recent cohorts in 9th and 10th grade proficiency in Reading, Language Usage, and Mathematics.

Taylor Prep
Reading - NWEA National Percentile

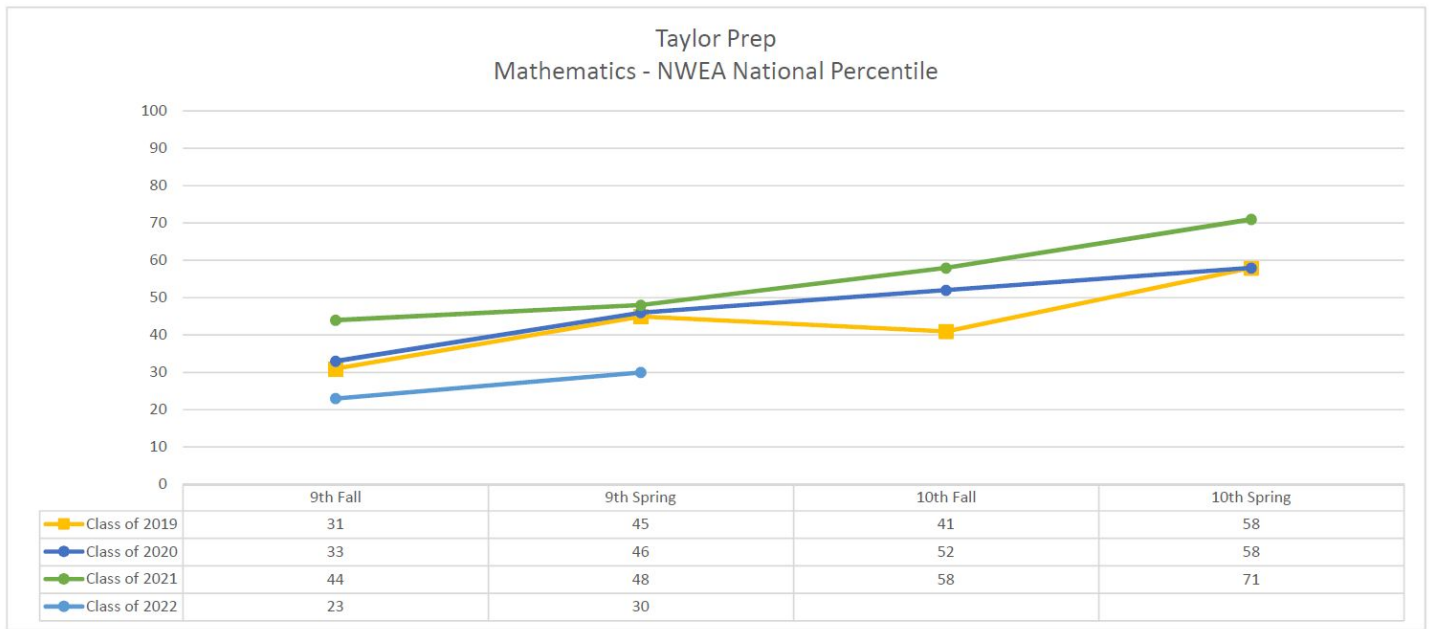


	9th Fall	9th Spring	10th Fall	10th Spring
Class of 2019	31	67	42	71
Class of 2020	40	64	52	69
Class of 2021	47	59	44	70
Class of 2022	42	51		

Taylor Prep
Language Usage - NWEA National Percentile



	9th Fall	9th Spring	10th Fall	10th Spring
Class of 2019	34	65	49	66
Class of 2020	50	59	57	69
Class of 2021	53	67	69	76
Class of 2022	47	54		



6. IDENTIFY THE NUMBER AND PERCENT OF STUDENTS REPRESENTED BY PARENTS AT PARENT-TEACHER CONFERENCES

2018-2019

Taylor Prep had 108 students represented at Parent-Teacher Conferences, representing 25% of the student population.

2017-2018

Taylor Prep had 100 students represented at Parent-Teacher Conferences, representing 25% of the student population.

7. FOR HIGH SCHOOLS, ONLY ALSO REPORT ON THE FOLLOWING:

a. THE NUMBER AND PERCENT OF POSTSECONDARY ENROLLMENTS (DUAL ENROLLMENT)

2018-19

Taylor Prep had 4 students in dual enrollment, representing 1% of the student population.

2017-18

Taylor Prep had 3 students in dual enrollment, representing 1% of the student population.

b. THE NUMBER OF COLLEGE EQUIVALENT COURSES OFFERED (AP/IB)

2018-19

Taylor Prep offered 11 Advanced Placement (AP) courses.

2017-18

Taylor Prep offered 13 Advanced Placement (AP) courses.

c. THE NUMBER AND PERCENTAGE OF STUDENTS ENROLLED IN COLLEGE EQUIVALENT COURSES (AP/IB)

2018-19

Taylor Prep had 201 students enrolled in Advanced Placement (AP) courses, representing 46% of the student population.

2017-18

Taylor Prep had 220 students enrolled in Advanced Placement (AP) courses, representing 51% of the student population.

d. THE NUMBER AND PERCENTAGE OF STUDENTS RECEIVING A SCORE LEADING TO COLLEGE CREDIT

2018-19

Taylor Prep had 42 students receive a score leading to college credit (3 or higher) on the AP Exam, representing 21% of students enrolled in an AP course.

2017-18

Taylor Prep had 31 students receive a score leading to college credit (3 or higher) on the AP Exam, representing 14% of students enrolled in an AP course.

Thank you for an amazing 2018-2019 school year. We take pride in the amazing work accomplished by our staff and students. We will continue to improve in all areas and look forward to another rewarding and successful year.

Sincerely,

A handwritten signature in cursive script that reads "Erica Sharp".

Erica Sharp
Principal

Annual Education Report Taylor Preparatory High School (01380)

M-STEP Grades 3-11

Subject	Grade	Student Group	School Year	State Percent Students Proficient	State Number Students Proficient	District Percent Students Proficient	District Number Students Proficient	School Percent Students Proficient	School Number Students Proficient	Percent Advanced	Number Advanced	Percent Proficient	Number Proficient	Percent Partially Proficient	Number Partially Proficient	Percent Not Proficient	Number Not Proficient
Social Studies	11th Grade Content	All Students	2017-18	48.5%	50,865	29.2%	26	29.2%	26	5%	4	*	22	50.6%	45	20.2%	18
Social Studies	11th Grade Content	All Students	2018-19	46.6%	47,628	47.7%	41	47.7%	41	9.3%	8	38.4%	33	45.3%	39	7.0%	6
Social Studies	11th Grade Content	Asian	2017-18	65.3%	2,493	*	*	*	*	*	*	*	*	*	*	*	*
Social Studies	11th Grade Content	Black or African American	2017-18	21.1%	3,335	15.8%	6	15.8%	6	10%	<3	*	*	60.5%	23	23.7%	9
Social Studies	11th Grade Content	Black or African American	2018-19	20.1%	3,081	45.2%	14	45.2%	14	10%	<3	*	*	*	14	10%	3
Social Studies	11th Grade Content	Hispanic of Any Race	2017-18	36.2%	2,582	*	*	*	*	*	*	*	*	*	*	*	*
Social Studies	11th Grade Content	Hispanic of Any Race	2018-19	32.8%	2,336	*	*	*	*	*	*	*	*	*	*	*	*
Social Studies	11th Grade Content	Native Hawaiian or Other Pacific Islander	2017-18	44.9%	40	*	*	*	*	*	*	*	*	*	*	*	*

Annual Education Report Taylor Preparatory High School (01380)

M-STEP Grades 3-11

Subject	Grade	Student Group	School Year	State Percent Students Proficient	State Number Students Proficient	District Percent Students Proficient	District Number Students Proficient	School Percent Students Proficient	School Number Students Proficient	Percent Advanced	Number Advanced	Percent Proficient	Number Proficient	Percent Partially Proficient	Number Partially Proficient	Percent Not Proficient	Number Not Proficient
Social Studies	11th Grade Content	Two or More Races	2017-18	46.3%	1,368	*	*	*	*	*	*	*	*	*	*	*	*
Social Studies	11th Grade Content	Two or More Races	2018-19	46.1%	1,415	*	*	*	*	*	*	*	*	*	*	*	*
Social Studies	11th Grade Content	White	2017-18	54.8%	40,773	41.2%	14	41.2%	14	10%	<3	*	*	41.2%	14	17.6%	6
Social Studies	11th Grade Content	White	2018-19	52.6%	37,949	52.5%	21	52.5%	21	12.5%	5	40.0%	16	*	*	10%	1
Social Studies	11th Grade Content	Female	2017-18	45.4%	23,703	19.1%	9	19.1%	9	10%	<3	*	*	61.7%	29	19.1%	9
Social Studies	11th Grade Content	Female	2018-19	44.1%	22,547	40.0%	18	40.0%	18	10%	<3	*	*	*	24	10%	3
Social Studies	11th Grade Content	Male	2017-18	51.6%	27,162	40.5%	17	40.5%	17	10%	4	*	13	38.1%	16	21.4%	9
Social Studies	11th Grade Content	Male	2018-19	49.1%	25,081	56.1%	23	56.1%	23	14.6%	6	41.5%	17	*	15	10%	3
Social Studies	11th Grade Content	Economically Disadvantaged	2017-18	32.5%	14,489	23.1%	15	23.1%	15	6.2%	4	16.9%	11	55.4%	36	21.5%	14

Annual Education Report Taylor Preparatory High School (01380)

M-STEP Grades 3-11

Subject	Grade	Student Group	School Year	State Percent Student's Proficient	State Number Student's Proficient	District Percent Student's Proficient	District Number Student's Proficient	School Percent Student's Proficient	School Number Student's Proficient	Percent Advanced	Number Advanced	Percent Proficient	Number Proficient	Percent Partially Proficient	Number Partially Proficient	Percent Not Proficient	Number Not Proficient
Social Studies	11th Grade Content	Economically Disadvantaged	2018-19	30.6%	13,131	37.3%	19	37.3%	19	10%	3	*	16	51.0%	26	11.8%	6
Social Studies	11th Grade Content	English Learners	2017-18	11.1%	491	*	*	*	*	*	*	*	*	*	*	*	*
Social Studies	11th Grade Content	English Learners	2018-19	10.3%	516	*	*	*	*	*	*	*	*	*	*	*	*
Social Studies	11th Grade Content	Students With Disabilities	2017-18	16.2%	1,531	50%	<3	50%	*	50%	<3	50%	<3	*	4	*	5
Social Studies	11th Grade Content	Students With Disabilities	2018-19	16.1%	1,512	*	*	*	*	*	*	*	*	*	*	*	*
Social Studies	11th Grade Content	Homeless	2017-18	24.6%	357	*	*	*	*	*	*	*	*	*	*	*	*

Annual Education Report Taylor Preparatory High School (01380)

SAT

Location Name	School Year	Subject	Student Group	Mean SAT Score	Benchmark	Met or Exceeded	% Met or Exceeded	Did Not Meet	% Did Not Meet	Number Assessed
Taylor Preparatory High School	2017-18	Total Score	All Students	929.7	N/A	19	20.9%	72	79.1%	91
Taylor Preparatory High School	2018-19	Total Score	All Students	940.8	N/A	20	22.7%	68	77.3%	88
Taylor Preparatory High School	2017-18	Total Score	Asian	*	N/A	*	*	*	*	<10
Taylor Preparatory High School	2017-18	Total Score	Black or African American	882.3	N/A	3	10%	36	90%	39
Taylor Preparatory High School	2018-19	Total Score	Black or African American	917.2	N/A	4	12.5%	28	87.5%	32
Taylor Preparatory High School	2017-18	Total Score	Hispanic of Any Race	*	N/A	*	*	*	*	<10
Taylor Preparatory High School	2018-19	Total Score	Hispanic of Any Race	*	N/A	*	*	*	*	<10
Taylor Preparatory High School	2017-18	Total Score	Native Hawaiian or Other Pacific Islander	*	N/A	*	*	*	*	<10
Taylor Preparatory High School	2017-18	Total Score	Two or More Races	*	N/A	*	*	*	*	<10
Taylor Preparatory High School	2018-19	Total Score	Two or More Races	*	N/A	*	*	*	*	<10

Annual Education Report Taylor Preparatory High School (01380)

SAT

Location Name	School Year	Subject	Student Group	Mean SAT Score	Benchmark	Met or Exceeded	% Met or Exceeded	Did Not Meet	% Did Not Meet	Number Assessed
Taylor Preparatory High School	2017-18	Total Score	White	942.0	N/A	9	25.7%	26	74.3%	35
Taylor Preparatory High School	2018-19	Total Score	White	944.4	N/A	11	26.8%	30	73.2%	41
Taylor Preparatory High School	2017-18	Total Score	Female	888.9	N/A	4	10%	43	90%	47
Taylor Preparatory High School	2018-19	Total Score	Female	930.0	N/A	8	17.0%	39	83.0%	47
Taylor Preparatory High School	2017-18	Total Score	Male	973.2	N/A	15	34.1%	29	65.9%	44
Taylor Preparatory High School	2018-19	Total Score	Male	953.2	N/A	12	29.3%	29	70.7%	41
Taylor Preparatory High School	2017-18	Total Score	Economically Disadvantaged	927.6	N/A	14	20.9%	53	79.1%	67
Taylor Preparatory High School	2018-19	Total Score	Economically Disadvantaged	915.4	N/A	10	19.2%	42	80.8%	52
Taylor Preparatory High School	2017-18	Total Score	Not Economically Disadvantaged	935.4	N/A	5	20.8%	19	79.2%	24
Taylor Preparatory High School	2018-19	Total Score	Not Economically Disadvantaged	977.5	N/A	10	27.8%	26	72.2%	36
Taylor Preparatory High School	2017-18	Total Score	English Learners	*	N/A	*	*	*	*	<10

Annual Education Report Taylor Preparatory High School (01380)

SAT

Location Name	School Year	Subject	Student Group	Mean SAT Score	Benchmark	Met or Exceeded	% Met or Exceeded	Did Not Meet	% Did Not Meet	Number Assessed
Taylor Preparatory High School	2018-19	Total Score	English Learners	*	N/A	*	*	*	*	<10
Taylor Preparatory High School	2017-18	Total Score	Not English Learners	932.8	N/A	19	22.1%	67	77.9%	86
Taylor Preparatory High School	2018-19	Total Score	Not English Learners	935.4	N/A	17	20.5%	66	79.5%	83
Taylor Preparatory High School	2017-18	Total Score	Not Migrant	929.7	N/A	19	20.9%	72	79.1%	91
Taylor Preparatory High School	2018-19	Total Score	Not Migrant	940.8	N/A	20	22.7%	68	77.3%	88
Taylor Preparatory High School	2017-18	Total Score	Students With Disabilities	832.5	N/A	<3	50%	*	50%	12
Taylor Preparatory High School	2018-19	Total Score	Students With Disabilities	*	N/A	*	*	*	*	<10
Taylor Preparatory High School	2017-18	Total Score	Students Without Disabilities	944.4	N/A	18	22.8%	61	77.2%	79
Taylor Preparatory High School	2018-19	Total Score	Students Without Disabilities	949.6	N/A	20	24.1%	63	75.9%	83
Taylor Preparatory High School	2017-18	Total Score	Homeless	*	N/A	*	*	*	*	<10
Taylor Preparatory High School	2017-18	Total Score	Not Homeless	932.0	N/A	19	21.1%	71	78.9%	90

Annual Education Report Taylor Preparatory High School (01380)

SAT

Location Name	School Year	Subject	Student Group	Mean SAT Score	Benchmark	Met or Exceeded	% Met or Exceeded	Did Not Meet	% Did Not Meet	Number Assessed
Taylor Preparatory High School	2018-19	Total Score	Not Homeless	940.8	N/A	20	22.7%	68	77.3%	88
Taylor Preparatory High School	2017-18	Total Score	Not Foster Care	929.7	N/A	19	20.9%	72	79.1%	91
Taylor Preparatory High School	2018-19	Total Score	Not Foster Care	940.8	N/A	20	22.7%	68	77.3%	88
Taylor Preparatory High School	2017-18	Total Score	Not Military Connected	929.7	N/A	19	20.9%	72	79.1%	91
Taylor Preparatory High School	2018-19	Total Score	Not Military Connected	940.8	N/A	20	22.7%	68	77.3%	88
Taylor Preparatory High School	2017-18	Evidence-Based Reading and Writing	All Students	474.2	480	42	46.2%	49	53.8%	91
Taylor Preparatory High School	2018-19	Evidence-Based Reading and Writing	All Students	478.1	480	43	48.9%	45	51.1%	88
Taylor Preparatory High School	2017-18	Evidence-Based Reading and Writing	Asian	*	480	*	*	*	*	<10
Taylor Preparatory High School	2017-18	Evidence-Based Reading and Writing	Black or African American	452.6	480	16	41.0%	23	59.0%	39
Taylor Preparatory High School	2018-19	Evidence-Based Reading and Writing	Black or African American	475.6	480	14	43.8%	18	56.3%	32
Taylor Preparatory High School	2017-18	Evidence-Based Reading and Writing	Hispanic of Any Race	*	480	*	*	*	*	<10

Annual Education Report Taylor Preparatory High School (01380)

SAT

Location Name	School Year	Subject	Student Group	Mean SAT Score	Benchmark	Met or Exceeded	% Met or Exceeded	Did Not Meet	% Did Not Meet	Number Assessed
Taylor Preparatory High School	2018-19	Evidence-Based Reading and Writing	Hispanic of Any Race	*	480	*	*	*	*	<10
Taylor Preparatory High School	2017-18	Evidence-Based Reading and Writing	Native Hawaiian or Other Pacific Islander	*	480	*	*	*	*	<10
Taylor Preparatory High School	2017-18	Evidence-Based Reading and Writing	Two or More Races	*	480	*	*	*	*	<10
Taylor Preparatory High School	2018-19	Evidence-Based Reading and Writing	Two or More Races	*	480	*	*	*	*	<10
Taylor Preparatory High School	2017-18	Evidence-Based Reading and Writing	White	479.1	480	18	51.4%	17	48.6%	35
Taylor Preparatory High School	2018-19	Evidence-Based Reading and Writing	White	475.6	480	21	51.2%	20	48.8%	41
Taylor Preparatory High School	2017-18	Evidence-Based Reading and Writing	Female	456.6	480	18	38.3%	29	61.7%	47
Taylor Preparatory High School	2018-19	Evidence-Based Reading and Writing	Female	475.5	480	21	44.7%	26	55.3%	47
Taylor Preparatory High School	2017-18	Evidence-Based Reading and Writing	Male	493.0	480	24	54.5%	20	45.5%	44
Taylor Preparatory High School	2018-19	Evidence-Based Reading and Writing	Male	481.0	480	22	53.7%	19	46.3%	41

Annual Education Report Taylor Preparatory High School (01380)

SAT

Location Name	School Year	Subject	Student Group	Mean SAT Score	Benchmark	Met or Exceeded	% Met or Exceeded	Did Not Meet	% Did Not Meet	Number Assessed
Taylor Preparatory High School	2017-18	Evidence-Based Reading and Writing	Economically Disadvantaged	476.4	480	30	44.8%	37	55.2%	67
Taylor Preparatory High School	2018-19	Evidence-Based Reading and Writing	Economically Disadvantaged	463.5	480	21	40.4%	31	59.6%	52
Taylor Preparatory High School	2017-18	Evidence-Based Reading and Writing	Not Economically Disadvantaged	467.9	480	12	50.0%	12	50.0%	24
Taylor Preparatory High School	2018-19	Evidence-Based Reading and Writing	Not Economically Disadvantaged	499.2	480	22	61.1%	14	38.9%	36
Taylor Preparatory High School	2017-18	Evidence-Based Reading and Writing	English Learners	*	480	*	*	*	*	<10
Taylor Preparatory High School	2018-19	Evidence-Based Reading and Writing	English Learners	*	480	*	*	*	*	<10
Taylor Preparatory High School	2017-18	Evidence-Based Reading and Writing	Not English Learners	476.2	480	42	48.8%	44	51.2%	86
Taylor Preparatory High School	2018-19	Evidence-Based Reading and Writing	Not English Learners	477.2	480	40	48.2%	43	51.8%	83
Taylor Preparatory High School	2017-18	Evidence-Based Reading and Writing	Not Migrant	474.2	480	42	46.2%	49	53.8%	91
Taylor Preparatory High School	2018-19	Evidence-Based Reading and Writing	Not Migrant	478.1	480	43	48.9%	45	51.1%	88
Taylor Preparatory High School	2017-18	Evidence-Based Reading and Writing	Students With Disabilities	435.8	480	5	50%	7	50%	12

Annual Education Report Taylor Preparatory High School (01380)

SAT

Location Name	School Year	Subject	Student Group	Mean SAT Score	Benchmark	Met or Exceeded	% Met or Exceeded	Did Not Meet	% Did Not Meet	Number Assessed
Taylor Preparatory High School	2018-19	Evidence-Based Reading and Writing	Students With Disabilities	*	480	*	*	*	*	<10
Taylor Preparatory High School	2017-18	Evidence-Based Reading and Writing	Students Without Disabilities	480.0	480	37	46.8%	42	53.2%	79
Taylor Preparatory High School	2018-19	Evidence-Based Reading and Writing	Students Without Disabilities	482.3	480	42	50.6%	41	49.4%	83
Taylor Preparatory High School	2017-18	Evidence-Based Reading and Writing	Homeless	*	480	*	*	*	*	<10
Taylor Preparatory High School	2017-18	Evidence-Based Reading and Writing	Not Homeless	475.8	480	42	46.7%	48	53.3%	90
Taylor Preparatory High School	2018-19	Evidence-Based Reading and Writing	Not Homeless	478.1	480	43	48.9%	45	51.1%	88
Taylor Preparatory High School	2017-18	Evidence-Based Reading and Writing	Not Foster Care	474.2	480	42	46.2%	49	53.8%	91
Taylor Preparatory High School	2018-19	Evidence-Based Reading and Writing	Not Foster Care	478.1	480	43	48.9%	45	51.1%	88
Taylor Preparatory High School	2017-18	Evidence-Based Reading and Writing	Not Military Connected	474.2	480	42	46.2%	49	53.8%	91
Taylor Preparatory High School	2018-19	Evidence-Based Reading and Writing	Not Military Connected	478.1	480	43	48.9%	45	51.1%	88
Taylor Preparatory High School	2017-18	Mathematics	All Students	455.5	530	19	20.9%	72	79.1%	91

Annual Education Report Taylor Preparatory High School (01380)

SAT

Location Name	School Year	Subject	Student Group	Mean SAT Score	Benchmark	Met or Exceeded	% Met or Exceeded	Did Not Meet	% Did Not Meet	Number Assessed
Taylor Preparatory High School	2018-19	Mathematics	All Students	462.7	530	24	27.3%	64	72.7%	88
Taylor Preparatory High School	2017-18	Mathematics	Asian	*	530	*	*	*	*	<10
Taylor Preparatory High School	2017-18	Mathematics	Black or African American	429.7	530	3	10%	36	90%	39
Taylor Preparatory High School	2018-19	Mathematics	Black or African American	441.6	530	5	15.6%	27	84.4%	32
Taylor Preparatory High School	2017-18	Mathematics	Hispanic of Any Race	*	530	*	*	*	*	<10
Taylor Preparatory High School	2018-19	Mathematics	Hispanic of Any Race	*	530	*	*	*	*	<10
Taylor Preparatory High School	2017-18	Mathematics	Native Hawaiian or Other Pacific Islander	*	530	*	*	*	*	<10
Taylor Preparatory High School	2017-18	Mathematics	Two or More Races	*	530	*	*	*	*	<10
Taylor Preparatory High School	2018-19	Mathematics	Two or More Races	*	530	*	*	*	*	<10
Taylor Preparatory High School	2017-18	Mathematics	White	462.9	530	9	25.7%	26	74.3%	35

Annual Education Report Taylor Preparatory High School (01380)

SAT

Location Name	School Year	Subject	Student Group	Mean SAT Score	Benchmark	Met or Exceeded	% Met or Exceeded	Did Not Meet	% Did Not Meet	Number Assessed
Taylor Preparatory High School	2018-19	Mathematics	White	468.8	530	13	31.7%	28	68.3%	41
Taylor Preparatory High School	2017-18	Mathematics	Female	432.3	530	4	10%	43	90%	47
Taylor Preparatory High School	2018-19	Mathematics	Female	454.5	530	10	21.3%	37	78.7%	47
Taylor Preparatory High School	2017-18	Mathematics	Male	480.2	530	15	34.1%	29	65.9%	44
Taylor Preparatory High School	2018-19	Mathematics	Male	472.2	530	14	34.1%	27	65.9%	41
Taylor Preparatory High School	2017-18	Mathematics	Economically Disadvantaged	451.2	530	14	20.9%	53	79.1%	67
Taylor Preparatory High School	2018-19	Mathematics	Economically Disadvantaged	451.9	530	12	23.1%	40	76.9%	52
Taylor Preparatory High School	2017-18	Mathematics	Not Economically Disadvantaged	467.5	530	5	20.8%	19	79.2%	24
Taylor Preparatory High School	2018-19	Mathematics	Not Economically Disadvantaged	478.3	530	12	33.3%	24	66.7%	36
Taylor Preparatory High School	2017-18	Mathematics	English Learners	*	530	*	*	*	*	<10
Taylor Preparatory High School	2018-19	Mathematics	English Learners	*	530	*	*	*	*	<10

Annual Education Report Taylor Preparatory High School (01380)

SAT

Location Name	School Year	Subject	Student Group	Mean SAT Score	Benchmark	Met or Exceeded	% Met or Exceeded	Did Not Meet	% Did Not Meet	Number Assessed
Taylor Preparatory High School	2017-18	Mathematics	Not English Learners	456.6	530	19	22.1%	67	77.9%	86
Taylor Preparatory High School	2018-19	Mathematics	Not English Learners	458.2	530	20	24.1%	63	75.9%	83
Taylor Preparatory High School	2017-18	Mathematics	Not Migrant	455.5	530	19	20.9%	72	79.1%	91
Taylor Preparatory High School	2018-19	Mathematics	Not Migrant	462.7	530	24	27.3%	64	72.7%	88
Taylor Preparatory High School	2017-18	Mathematics	Students With Disabilities	396.7	530	<3	50%	*	50%	12
Taylor Preparatory High School	2018-19	Mathematics	Students With Disabilities	*	530	*	*	*	*	<10
Taylor Preparatory High School	2017-18	Mathematics	Students Without Disabilities	464.4	530	18	22.8%	61	77.2%	79
Taylor Preparatory High School	2018-19	Mathematics	Students Without Disabilities	467.3	530	24	28.9%	59	71.1%	83
Taylor Preparatory High School	2017-18	Mathematics	Homeless	*	530	*	*	*	*	<10
Taylor Preparatory High School	2017-18	Mathematics	Not Homeless	456.2	530	19	21.1%	71	78.9%	90
Taylor Preparatory High School	2018-19	Mathematics	Not Homeless	462.7	530	24	27.3%	64	72.7%	88

Annual Education Report Taylor Preparatory High School (01380)

SAT

Location Name	School Year	Subject	Student Group	Mean SAT Score	Benchmark	Met or Exceeded	% Met or Exceeded	Did Not Meet	% Did Not Meet	Number Assessed
Taylor Preparatory High School	2017-18	Mathematics	Not Foster Care	455.5	530	19	20.9%	72	79.1%	91
Taylor Preparatory High School	2018-19	Mathematics	Not Foster Care	462.7	530	24	27.3%	64	72.7%	88
Taylor Preparatory High School	2017-18	Mathematics	Not Military Connected	455.5	530	19	20.9%	72	79.1%	91
Taylor Preparatory High School	2018-19	Mathematics	Not Military Connected	462.7	530	24	27.3%	64	72.7%	88

Annual Education Report Taylor Preparatory High School (01380)

MI -Access Functional Independence

Subject	Grade	Student Group	School Year	State Percent Students Proficient	District Percent Students Proficient	School Percent Students Proficient	Percent Surpassed	Percent Attained	Percent Emerging
ELA	11th Grade Content	All Students	2018-19	81.9%	*	*	*	*	*
Mathematics	11th Grade Content	All Students	2018-19	56.7%	*	*	*	*	*
Science	11th Grade Content	All Students	2018-19	49.1%	*	*	*	*	*
Social Studies	11th Grade Content	All Students	2018-19	36.4%	*	*	*	*	*
ELA	11th Grade Content	Black or African American	2018-19	74.4%	*	*	*	*	*
Mathematics	11th Grade Content	Black or African American	2018-19	45.7%	*	*	*	*	*
Science	11th Grade Content	Black or African American	2018-19	31.5%	*	*	*	*	*
Social Studies	11th Grade Content	Black or African American	2018-19	26.4%	*	*	*	*	*
ELA	11th Grade Content	Hispanic of Any Race	2018-19	83.5%	*	*	*	*	*
Mathematics	11th Grade Content	Hispanic of Any Race	2018-19	57.8%	*	*	*	*	*
Science	11th Grade Content	Hispanic of Any Race	2018-19	44.7%	*	*	*	*	*
Social Studies	11th Grade Content	Hispanic of Any Race	2018-19	35.0%	*	*	*	*	*
ELA	11th Grade Content	White	2018-19	85.2%	*	*	*	*	*
Mathematics	11th Grade Content	White	2018-19	60.6%	*	*	*	*	*

Annual Education Report Taylor Preparatory High School (01380)

MI -Access Functional Independence

Subject	Grade	Student Group	School Year	State Percent Students Proficient	District Percent Students Proficient	School Percent Students Proficient	Percent Surpassed	Percent Attained	Percent Emerging
Science	11th Grade Content	White	2018-19	57.3%	*	*	*	*	*
Social Studies	11th Grade Content	White	2018-19	41.1%	*	*	*	*	*
ELA	11th Grade Content	Female	2018-19	83.9%	*	*	*	*	*
Mathematics	11th Grade Content	Female	2018-19	51.9%	*	*	*	*	*
Science	11th Grade Content	Female	2018-19	47.4%	*	*	*	*	*
Social Studies	11th Grade Content	Female	2018-19	32.6%	*	*	*	*	*
ELA	11th Grade Content	Male	2018-19	80.8%	*	*	*	*	*
Mathematics	11th Grade Content	Male	2018-19	59.2%	*	*	*	*	*
Science	11th Grade Content	Male	2018-19	50.0%	*	*	*	*	*
Social Studies	11th Grade Content	Male	2018-19	38.4%	*	*	*	*	*
ELA	11th Grade Content	Economically Disadvantaged	2018-19	81.1%	*	*	*	*	*
Mathematics	11th Grade Content	Economically Disadvantaged	2018-19	56.7%	*	*	*	*	*
Science	11th Grade Content	Economically Disadvantaged	2018-19	48.3%	*	*	*	*	*
Social Studies	11th Grade Content	Economically Disadvantaged	2018-19	35.5%	*	*	*	*	*

Annual Education Report Taylor Preparatory High School (01380)

MI -Access Functional Independence

Subject	Grade	Student Group	School Year	State Percent Students Proficient	District Percent Students Proficient	School Percent Students Proficient	Percent Surpassed	Percent Attained	Percent Emerging
ELA	11th Grade Content	English Learners	2018-19	77.8%	*	*	*	*	*
Mathematics	11th Grade Content	English Learners	2018-19	53.6%	*	*	*	*	*
Science	11th Grade Content	English Learners	2018-19	40.5%	*	*	*	*	*
Social Studies	11th Grade Content	English Learners	2018-19	31.0%	*	*	*	*	*

Annual Education Report Taylor Preparatory High School (01380)

MI -Access Supported Independence

Subject	Grade	Student Group	School Year	State Percent Students Proficient	District Percent Students Proficient	School Percent Students Proficient	Percent Surpassed	Percent Attained	Percent Emerging
---------	-------	---------------	-------------	-----------------------------------	--------------------------------------	------------------------------------	-------------------	------------------	------------------

No Data to Display

Annual Education Report Taylor Preparatory High School (01380)

MI -Access Participation

Subject	Grade	Student Group	School Year	State Percent Students Proficient	District Percent Students Proficient	School Percent Students Proficient	Percent Surpassed	Percent Attained	Percent Emerging
---------	-------	---------------	-------------	-----------------------------------	--------------------------------------	------------------------------------	-------------------	------------------	------------------

No Data to Display

Annual Education Report Taylor Preparatory High School (01380)

MI-Access Students Who Took MI-Access, by Test Type

Subject	Grade	Student Group	School Year	Number Tested - M-STEP, SAT or MI-Access	Number Tested - Any MI-Access	Percent Tested - Any MI-Access	Number Tested - Functional Independence	Percent Tested - Functional Independence	Number Tested - Supported Independence	Percent Tested - Supported Independence	Number Tested - Participation	Percent Tested - Participation
ELA	All Grades (Combined)	All Students	2017-18	91	<10	*	*	*	*	*	*	*
ELA	All Grades (Combined)	All Students	2018-19	92	<10	*	*	*	*	*	*	*
ELA	All Grades (Combined)	Asian	2017-18	<10	*	*	*	*	*	*	*	*
ELA	All Grades (Combined)	Black or African American	2017-18	39	<10	*	*	*	*	*	*	*
ELA	All Grades (Combined)	Black or African American	2018-19	34	<10	*	*	*	*	*	*	*
ELA	All Grades (Combined)	Hispanic of Any Race	2017-18	<10	*	*	*	*	*	*	*	*
ELA	All Grades (Combined)	Hispanic of Any Race	2018-19	<10	*	*	*	*	*	*	*	*
ELA	All Grades (Combined)	Native Hawaiian or Other Pacific Islander	2017-18	<10	*	*	*	*	*	*	*	*
ELA	All Grades (Combined)	Two or More Races	2018-19	<10	*	*	*	*	*	*	*	*
ELA	All Grades (Combined)	Two or More Races	2017-18	<10	*	*	*	*	*	*	*	*
ELA	All Grades (Combined)	White	2017-18	35	<10	*	*	*	*	*	*	*
ELA	All Grades (Combined)	White	2018-19	42	<10	*	*	*	*	*	*	*

Annual Education Report Taylor Preparatory High School (01380)

MI -Access Students Who Took MI -Access, by Test Type

Subject	Grade	Student Group	School Year	Number Tested - M-STEP, SAT or MI-Access	Number Tested - Any MI-Access	Percent Tested - Any MI-Access	Number Tested - Functional Independence	Percent Tested - Functional Independence	Number Tested - Supported Independence	Percent Tested - Supported Independence	Number Tested - Participation	Percent Tested - Participation
ELA	All Grades (Combined)	Female	2017-18	47	<10	*	*	*	*	*	*	*
ELA	All Grades (Combined)	Female	2018-19	50	<10	*	*	*	*	*	*	*
ELA	All Grades (Combined)	Male	2018-19	42	<10	*	*	*	*	*	*	*
ELA	All Grades (Combined)	Male	2017-18	44	<10	*	*	*	*	*	*	*
ELA	All Grades (Combined)	Economically Disadvantaged	2018-19	56	<10	*	*	*	*	*	*	*
ELA	All Grades (Combined)	Economically Disadvantaged	2017-18	67	<10	*	*	*	*	*	*	*
ELA	All Grades (Combined)	Not Economically Disadvantaged	2017-18	24	<10	*	*	*	*	*	*	*
ELA	All Grades (Combined)	Not Economically Disadvantaged	2018-19	36	<10	*	*	*	*	*	*	*
ELA	All Grades (Combined)	English Learners	2017-18	<10	*	*	*	*	*	*	*	*
ELA	All Grades (Combined)	English Learners	2018-19	<10	*	*	*	*	*	*	*	*

Annual Education Report Taylor Preparatory High School (01380)

MI-Access Students Who Took MI-Access, by Test Type

Subject	Grade	Student Group	School Year	Number Tested - M-STEP, SAT or MI-Access	Number Tested - Any MI-Access	Percent Tested - Any MI-Access	Number Tested - Functional Independence	Percent Tested - Functional Independence	Number Tested - Supported Independence	Percent Tested - Supported Independence	Number Tested - Participation	Percent Tested - Participation
ELA	All Grades (Combined)	Not English Learners	2018-19	86	<10	*	*	*	*	*	*	*
ELA	All Grades (Combined)	Not English Learners	2017-18	86	<10	*	*	*	*	*	*	*
ELA	All Grades (Combined)	Not Migrant	2018-19	92	<10	*	*	*	*	*	*	*
ELA	All Grades (Combined)	Not Migrant	2017-18	91	<10	*	*	*	*	*	*	*
ELA	All Grades (Combined)	Students With Disabilities	2017-18	12	<10	*	*	*	*	*	*	*
ELA	All Grades (Combined)	Students With Disabilities	2018-19	<10	*	*	*	*	*	*	*	*
ELA	All Grades (Combined)	Students Without Disabilities	2017-18	79	<10	*	*	*	*	*	*	*
ELA	All Grades (Combined)	Students Without Disabilities	2018-19	83	<10	*	*	*	*	*	*	*
ELA	All Grades (Combined)	Homeless	2017-18	<10	*	*	*	*	*	*	*	*
ELA	All Grades (Combined)	Not Homeless	2017-18	90	<10	*	*	*	*	*	*	*
ELA	All Grades (Combined)	Not Homeless	2018-19	92	<10	*	*	*	*	*	*	*
ELA	All Grades (Combined)	Not Foster Care	2017-18	91	<10	*	*	*	*	*	*	*

Annual Education Report Taylor Preparatory High School (01380)

MI -Access Students Who Took MI -Access, by Test Type

Subject	Grade	Student Group	School Year	Number Tested - M-STEP, SAT or MI-Access	Number Tested - Any MI-Access	Percent Tested - Any MI-Access	Number Tested - Functional Independence	Percent Tested - Functional Independence	Number Tested - Supported Independence	Percent Tested - Supported Independence	Number Tested - Participation	Percent Tested - Participation
ELA	All Grades (Combined)	Not Foster Care	2018-19	92	<10	*	*	*	*	*	*	*
ELA	All Grades (Combined)	Not Military Connected	2017-18	91	<10	*	*	*	*	*	*	*
ELA	All Grades (Combined)	Not Military Connected	2018-19	92	<10	*	*	*	*	*	*	*
Mathematics	All Grades (Combined)	All Students	2018-19	92	<10	*	*	*	*	*	*	*
Mathematics	All Grades (Combined)	All Students	2017-18	91	<10	*	*	*	*	*	*	*
Mathematics	All Grades (Combined)	Asian	2017-18	<10	*	*	*	*	*	*	*	*
Mathematics	All Grades (Combined)	Black or African American	2017-18	39	<10	*	*	*	*	*	*	*
Mathematics	All Grades (Combined)	Black or African American	2018-19	34	<10	*	*	*	*	*	*	*
Mathematics	All Grades (Combined)	Hispanic of Any Race	2018-19	<10	*	*	*	*	*	*	*	*
Mathematics	All Grades (Combined)	Hispanic of Any Race	2017-18	<10	*	*	*	*	*	*	*	*
Mathematics	All Grades (Combined)	Native Hawaiian or Other Pacific Islander	2017-18	<10	*	*	*	*	*	*	*	*
Mathematics	All Grades (Combined)	Two or More Races	2017-18	<10	*	*	*	*	*	*	*	*

Annual Education Report Taylor Preparatory High School (01380)

MI-Access Students Who Took MI-Access, by Test Type

Subject	Grade	Student Group	School Year	Number Tested - M-STEP, SAT or MI-Access	Number Tested - Any MI-Access	Percent Tested - Any MI-Access	Number Tested - Functional Independence	Percent Tested - Functional Independence	Number Tested - Supported Independence	Percent Tested - Supported Independence	Number Tested - Participation	Percent Tested - Participation
Mathematics	All Grades (Combined)	Two or More Races	2018-19	<10	*	*	*	*	*	*	*	*
Mathematics	All Grades (Combined)	White	2018-19	42	<10	*	*	*	*	*	*	*
Mathematics	All Grades (Combined)	White	2017-18	35	<10	*	*	*	*	*	*	*
Mathematics	All Grades (Combined)	Female	2018-19	50	<10	*	*	*	*	*	*	*
Mathematics	All Grades (Combined)	Female	2017-18	47	<10	*	*	*	*	*	*	*
Mathematics	All Grades (Combined)	Male	2017-18	44	<10	*	*	*	*	*	*	*
Mathematics	All Grades (Combined)	Male	2018-19	42	<10	*	*	*	*	*	*	*
Mathematics	All Grades (Combined)	Economically Disadvantaged	2017-18	67	<10	*	*	*	*	*	*	*
Mathematics	All Grades (Combined)	Economically Disadvantaged	2018-19	56	<10	*	*	*	*	*	*	*
Mathematics	All Grades (Combined)	Not Economically Disadvantaged	2017-18	24	<10	*	*	*	*	*	*	*

Annual Education Report Taylor Preparatory High School (01380)

MI-Access Students Who Took MI-Access, by Test Type

Subject	Grade	Student Group	School Year	Number Tested - M-STEP, SAT or MI-Access	Number Tested - Any MI-Access	Percent Tested - Any MI-Access	Number Tested - Functional Independence	Percent Tested - Functional Independence	Number Tested - Supported Independence	Percent Tested - Supported Independence	Number Tested - Participation	Percent Tested - Participation
Mathematics	All Grades (Combined)	Not Economically Disadvantaged	2018-19	36	<10	*	*	*	*	*	*	*
Mathematics	All Grades (Combined)	English Learners	2017-18	<10	*	*	*	*	*	*	*	*
Mathematics	All Grades (Combined)	English Learners	2018-19	<10	*	*	*	*	*	*	*	*
Mathematics	All Grades (Combined)	Not English Learners	2018-19	86	<10	*	*	*	*	*	*	*
Mathematics	All Grades (Combined)	Not English Learners	2017-18	86	<10	*	*	*	*	*	*	*
Mathematics	All Grades (Combined)	Not Migrant	2018-19	92	<10	*	*	*	*	*	*	*
Mathematics	All Grades (Combined)	Not Migrant	2017-18	91	<10	*	*	*	*	*	*	*
Mathematics	All Grades (Combined)	Students With Disabilities	2017-18	12	<10	*	*	*	*	*	*	*
Mathematics	All Grades (Combined)	Students With Disabilities	2018-19	<10	*	*	*	*	*	*	*	*
Mathematics	All Grades (Combined)	Students Without Disabilities	2017-18	79	<10	*	*	*	*	*	*	*
Mathematics	All Grades (Combined)	Students Without Disabilities	2018-19	83	<10	*	*	*	*	*	*	*

Annual Education Report Taylor Preparatory High School (01380)

MI -Access Students Who Took MI -Access, by Test Type

Subject	Grade	Student Group	School Year	Number Tested - M-STEP, SAT or MI-Access	Number Tested - Any MI-Access	Percent Tested - Any MI-Access	Number Tested - Functional Independence	Percent Tested - Functional Independence	Number Tested - Supported Independence	Percent Tested - Supported Independence	Number Tested - Participation	Percent Tested - Participation
Mathematics	All Grades (Combined)	Homeless	2017-18	<10	*	*	*	*	*	*	*	*
Mathematics	All Grades (Combined)	Not Homeless	2018-19	92	<10	*	*	*	*	*	*	*
Mathematics	All Grades (Combined)	Not Homeless	2017-18	90	<10	*	*	*	*	*	*	*
Mathematics	All Grades (Combined)	Not Foster Care	2017-18	91	<10	*	*	*	*	*	*	*
Mathematics	All Grades (Combined)	Not Foster Care	2018-19	92	<10	*	*	*	*	*	*	*
Mathematics	All Grades (Combined)	Not Military Connected	2017-18	91	<10	*	*	*	*	*	*	*
Mathematics	All Grades (Combined)	Not Military Connected	2018-19	92	<10	*	*	*	*	*	*	*
Science	All Grades (Combined)	All Students	2018-19	<10	*	*	*	*	*	*	*	*
Science	All Grades (Combined)	Black or African American	2018-19	<10	*	*	*	*	*	*	*	*
Science	All Grades (Combined)	Hispanic of Any Race	2018-19	<10	*	*	*	*	*	*	*	*
Science	All Grades (Combined)	White	2018-19	<10	*	*	*	*	*	*	*	*
Science	All Grades (Combined)	Female	2018-19	<10	*	*	*	*	*	*	*	*
Science	All Grades (Combined)	Male	2018-19	<10	*	*	*	*	*	*	*	*

Annual Education Report Taylor Preparatory High School (01380)

MI-Access Students Who Took MI-Access, by Test Type

Subject	Grade	Student Group	School Year	Number Tested - M-STEP, SAT or MI-Access	Number Tested - Any MI-Access	Percent Tested - Any MI-Access	Number Tested - Functional Independence	Percent Tested - Functional Independence	Number Tested - Supported Independence	Percent Tested - Supported Independence	Number Tested - Participation	Percent Tested - Participation
Science	All Grades (Combined)	Economically Disadvantaged	2018-19	<10	*	*	*	*	*	*	*	*
Science	All Grades (Combined)	English Learners	2018-19	<10	*	*	*	*	*	*	*	*
Science	All Grades (Combined)	Not English Learners	2018-19	<10	*	*	*	*	*	*	*	*
Science	All Grades (Combined)	Not Migrant	2018-19	<10	*	*	*	*	*	*	*	*
Science	All Grades (Combined)	Students With Disabilities	2018-19	<10	*	*	*	*	*	*	*	*
Science	All Grades (Combined)	Not Homeless	2018-19	<10	*	*	*	*	*	*	*	*
Science	All Grades (Combined)	Not Foster Care	2018-19	<10	*	*	*	*	*	*	*	*
Science	All Grades (Combined)	Not Military Connected	2018-19	<10	*	*	*	*	*	*	*	*
Social Studies	All Grades (Combined)	All Students	2017-18	89	<10	*	*	*	*	*	*	*
Social Studies	All Grades (Combined)	All Students	2018-19	90	<10	*	*	*	*	*	*	*
Social Studies	All Grades (Combined)	Asian	2017-18	<10	*	*	*	*	*	*	*	*
Social Studies	All Grades (Combined)	Black or African American	2018-19	33	<10	*	*	*	*	*	*	*

Annual Education Report Taylor Preparatory High School (01380)

MI -Access Students Who Took MI -Access, by Test Type

Subject	Grade	Student Group	School Year	Number Tested - M-STEP, SAT or MI-Access	Number Tested - Any MI-Access	Percent Tested - Any MI-Access	Number Tested - Functional Independence	Percent Tested - Functional Independence	Number Tested - Supported Independence	Percent Tested - Supported Independence	Number Tested - Participation	Percent Tested - Participation
Social Studies	All Grades (Combined)	Black or African American	2017-18	38	<10	*	*	*	*	*	*	*
Social Studies	All Grades (Combined)	Hispanic of Any Race	2017-18	<10	*	*	*	*	*	*	*	*
Social Studies	All Grades (Combined)	Hispanic of Any Race	2018-19	<10	*	*	*	*	*	*	*	*
Social Studies	All Grades (Combined)	Native Hawaiian or Other Pacific Islander	2017-18	<10	*	*	*	*	*	*	*	*
Social Studies	All Grades (Combined)	Two or More Races	2017-18	<10	*	*	*	*	*	*	*	*
Social Studies	All Grades (Combined)	Two or More Races	2018-19	<10	*	*	*	*	*	*	*	*
Social Studies	All Grades (Combined)	White	2018-19	41	<10	*	*	*	*	*	*	*
Social Studies	All Grades (Combined)	White	2017-18	34	<10	*	*	*	*	*	*	*
Social Studies	All Grades (Combined)	Female	2018-19	48	<10	*	*	*	*	*	*	*
Social Studies	All Grades (Combined)	Female	2017-18	47	<10	*	*	*	*	*	*	*
Social Studies	All Grades (Combined)	Male	2017-18	42	<10	*	*	*	*	*	*	*
Social Studies	All Grades (Combined)	Male	2018-19	42	<10	*	*	*	*	*	*	*

Annual Education Report Taylor Preparatory High School (01380)

MI-Access Students Who Took MI-Access, by Test Type

Subject	Grade	Student Group	School Year	Number Tested - M-STEP, SAT or MI-Access	Number Tested - Any MI-Access	Percent Tested - Any MI-Access	Number Tested - Functional Independence	Percent Tested - Functional Independence	Number Tested - Supported Independence	Percent Tested - Supported Independence	Number Tested - Participation	Percent Tested - Participation
Social Studies	All Grades (Combined)	Economically Disadvantaged	2018-19	55	<10	*	*	*	*	*	*	*
Social Studies	All Grades (Combined)	Economically Disadvantaged	2017-18	65	<10	*	*	*	*	*	*	*
Social Studies	All Grades (Combined)	Not Economically Disadvantaged	2018-19	35	<10	*	*	*	*	*	*	*
Social Studies	All Grades (Combined)	Not Economically Disadvantaged	2017-18	24	<10	*	*	*	*	*	*	*
Social Studies	All Grades (Combined)	English Learners	2018-19	<10	*	*	*	*	*	*	*	*
Social Studies	All Grades (Combined)	English Learners	2017-18	<10	*	*	*	*	*	*	*	*
Social Studies	All Grades (Combined)	Not English Learners	2017-18	84	<10	*	*	*	*	*	*	*
Social Studies	All Grades (Combined)	Not English Learners	2018-19	84	<10	*	*	*	*	*	*	*
Social Studies	All Grades (Combined)	Not Migrant	2018-19	90	<10	*	*	*	*	*	*	*
Social Studies	All Grades (Combined)	Not Migrant	2017-18	89	<10	*	*	*	*	*	*	*

Annual Education Report Taylor Preparatory High School (01380)

MI-Access Students Who Took MI-Access, by Test Type

Subject	Grade	Student Group	School Year	Number Tested - M-STEP, SAT or MI-Access	Number Tested - Any MI-Access	Percent Tested - Any MI-Access	Number Tested - Functional Independence	Percent Tested - Functional Independence	Number Tested - Supported Independence	Percent Tested - Supported Independence	Number Tested - Participation	Percent Tested - Participation
Social Studies	All Grades (Combined)	Students With Disabilities	2018-19	<10	*	*	*	*	*	*	*	*
Social Studies	All Grades (Combined)	Students With Disabilities	2017-18	11	<10	*	*	*	*	*	*	*
Social Studies	All Grades (Combined)	Students Without Disabilities	2018-19	81	<10	*	*	*	*	*	*	*
Social Studies	All Grades (Combined)	Students Without Disabilities	2017-18	78	<10	*	*	*	*	*	*	*
Social Studies	All Grades (Combined)	Homeless	2017-18	<10	*	*	*	*	*	*	*	*
Social Studies	All Grades (Combined)	Not Homeless	2018-19	90	<10	*	*	*	*	*	*	*
Social Studies	All Grades (Combined)	Not Homeless	2017-18	88	<10	*	*	*	*	*	*	*
Social Studies	All Grades (Combined)	Not Foster Care	2018-19	90	<10	*	*	*	*	*	*	*
Social Studies	All Grades (Combined)	Not Foster Care	2017-18	89	<10	*	*	*	*	*	*	*
Social Studies	All Grades (Combined)	Not Military Connected	2017-18	89	<10	*	*	*	*	*	*	*
Social Studies	All Grades (Combined)	Not Military Connected	2018-19	90	<10	*	*	*	*	*	*	*

Annual Education Report Taylor Preparatory High School (01380)
Accountability Details Subject Data

Testing Group	Subject	State Tested Total	State Not Tested Total	State Percent Proficient	District Tested Total	District Not Tested Total	District Percent Proficient *	School Tested Total	School Not Tested Total	School Percent Proficient **
All Students	ELA	98.8%	1.2%	49.69%	94.9%	5.1%	N/A	94.9%	5.1%	48.91%
All Students	Mathematics	98.9%	1.1%	39.95%	94.9%	5.1%	N/A	94.9%	5.1%	30.43%
All Students	Science	98.1%	1.9%	N/A	92.9%	7.1%	N/A	92.9%	7.1%	N/A
All Students	Social Studies	98.0%	2.0%	31.23%	92.9%	7.1%	N/A	92.9%	7.1%	47.25%
American Indian or Alaska Native	ELA	98.2%	1.8%	41.43%	N/A	N/A	N/A	N/A	N/A	N/A
American Indian or Alaska Native	Mathematics	98.3%	1.7%	29.62%	N/A	N/A	N/A	N/A	N/A	N/A
American Indian or Alaska Native	Science	97.4%	2.6%	N/A	N/A	N/A	N/A	N/A	N/A	N/A
American Indian or Alaska Native	Social Studies	97.4%	2.6%	25.66%	N/A	N/A	N/A	N/A	N/A	N/A
Asian	ELA	99.3%	0.7%	71.37%	<10	<10	<10	<10	<10	<10
Asian	Mathematics	99.5%	0.5%	70.67%	<10	<10	<10	<10	<10	<10
Asian	Science	99.3%	0.7%	N/A	<10	<10	<10	<10	<10	<10
Asian	Social Studies	99.3%	0.7%	50.38%	<10	<10	<10	<10	<10	<10
Black or African American	ELA	98.0%	2.0%	25.07%	97.2%	2.8%	N/A	97.2%	2.8%	42.86%
Black or African American	Mathematics	98.0%	2.0%	14.94%	97.2%	2.8%	N/A	97.2%	2.8%	20.00%
Black or African American	Science	96.7%	3.3%	N/A	94.4%	5.6%	N/A	94.4%	5.6%	N/A
Black or African American	Social Studies	96.6%	3.4%	10.83%	94.4%	5.6%	N/A	94.4%	5.6%	44.12%
Hispanic of Any Race	ELA	98.7%	1.3%	38.01%	<10	<10	<10	<10	<10	<10

Annual Education Report Taylor Preparatory High School (01380)

Accountability Details Subject Data

Testing Group	Subject	State Tested Total	State Not Tested Total	State Percent Proficient	District Tested Total	District Not Tested Total	District Percent Proficient *	School Tested Total	School Not Tested Total	School Percent Proficient **
Hispanic of Any Race	Mathematics	98.8%	1.2%	26.94%	<10	<10	<10	<10	<10	<10
Hispanic of Any Race	Science	98.0%	2.0%	N/A	<10	<10	<10	<10	<10	<10
Hispanic of Any Race	Social Studies	98.0%	2.0%	19.37%	<10	<10	<10	<10	<10	<10
Native Hawaiian or Other Pacific Islander	ELA	99.5%	0.5%	50.95%	N/A	N/A	N/A	N/A	N/A	N/A
Native Hawaiian or Other Pacific Islander	Mathematics	99.5%	0.5%	37.78%	N/A	N/A	N/A	N/A	N/A	N/A
Native Hawaiian or Other Pacific Islander	Science	99.2%	0.8%	N/A	N/A	N/A	N/A	N/A	N/A	N/A
Native Hawaiian or Other Pacific Islander	Social Studies	99.2%	0.8%	24.67%	N/A	N/A	N/A	N/A	N/A	N/A
Two or More Races	ELA	98.7%	1.3%	47.09%	<10	<10	<10	<10	<10	<10
Two or More Races	Mathematics	98.7%	1.3%	35.98%	<10	<10	<10	<10	<10	<10
Two or More Races	Science	97.9%	2.1%	N/A	<10	<10	<10	<10	<10	<10
Two or More Races	Social Studies	97.9%	2.1%	27.34%	<10	<10	<10	<10	<10	<10
White	ELA	99.0%	1.0%	56.44%	93.3%	6.7%	N/A	93.3%	6.7%	51.22%
White	Mathematics	99.1%	0.9%	46.59%	93.3%	6.7%	N/A	93.3%	6.7%	34.15%
White	Science	98.4%	1.6%	N/A	91.1%	8.9%	N/A	91.1%	8.9%	N/A
White	Social Studies	98.4%	1.6%	36.71%	91.1%	8.9%	N/A	91.1%	8.9%	53.66%
Female	ELA	98.9%	1.1%	53.92%	98.1%	1.9%	N/A	98.1%	1.9%	44.00%

Annual Education Report Taylor Preparatory High School (01380)
Accountability Details Subject Data

Testing Group	Subject	State Tested Total	State Not Tested Total	State Percent Proficient	District Tested Total	District Not Tested Total	District Percent Proficient *	School Tested Total	School Not Tested Total	School Percent Proficient **
Female	Mathematics	99.0%	1.0%	38.19%	98.1%	1.9%	N/A	98.1%	1.9%	26.00%
Female	Science	98.3%	1.7%	N/A	94.2%	5.8%	N/A	94.2%	5.8%	N/A
Female	Social Studies	98.2%	1.8%	28.84%	94.2%	5.8%	N/A	94.2%	5.8%	38.78%
Male	ELA	98.7%	1.3%	45.63%	91.3%	8.7%	N/A	91.3%	8.7%	54.76%
Male	Mathematics	98.7%	1.3%	41.64%	91.3%	8.7%	N/A	91.3%	8.7%	35.71%
Male	Science	97.9%	2.1%	N/A	91.3%	8.7%	N/A	91.3%	8.7%	N/A
Male	Social Studies	97.9%	2.1%	33.54%	91.3%	8.7%	N/A	91.3%	8.7%	57.14%
Economically Disadvantaged	ELA	98.4%	1.6%	34.98%	91.9%	8.1%	N/A	91.9%	8.1%	42.11%
Economically Disadvantaged	Mathematics	98.5%	1.5%	25.03%	91.9%	8.1%	N/A	91.9%	8.1%	28.07%
Economically Disadvantaged	Science	97.3%	2.7%	N/A	90.3%	9.7%	N/A	90.3%	9.7%	N/A
Economically Disadvantaged	Social Studies	97.2%	2.8%	17.58%	90.3%	9.7%	N/A	90.3%	9.7%	37.50%
English Learners	ELA	98.8%	1.2%	23.86%	<10	<10	<10	<10	<10	<10
English Learners	Mathematics	99.1%	0.9%	22.89%	<10	<10	<10	<10	<10	<10
English Learners	Science	98.2%	1.8%	N/A	<10	<10	<10	<10	<10	<10
English Learners	Social Studies	98.3%	1.7%	6.54%	<10	<10	<10	<10	<10	<10
Migrant	ELA	N/A	N/A	18.89%	N/A	N/A	N/A	N/A	N/A	N/A
Migrant	Mathematics	N/A	N/A	13.88%	N/A	N/A	N/A	N/A	N/A	N/A
Migrant	Social Studies	N/A	N/A	7.33%	N/A	N/A	N/A	N/A	N/A	N/A

Annual Education Report Taylor Preparatory High School (01380)
Accountability Details Subject Data

Testing Group	Subject	State Tested Total	State Not Tested Total	State Percent Proficient	District Tested Total	District Not Tested Total	District Percent Proficient *	School Tested Total	School Not Tested Total	School Percent Proficient **
Students With Disabilities	ELA	97.5%	2.5%	24.82%	<10	<10	<10	<10	<10	<10
Students With Disabilities	Mathematics	97.9%	2.1%	18.51%	<10	<10	<10	<10	<10	<10
Students With Disabilities	Science	95.3%	4.7%	N/A	<10	<10	<10	<10	<10	<10
Students With Disabilities	Social Studies	95.8%	4.2%	11.95%	<10	<10	<10	<10	<10	<10
Homeless	ELA	96.3%	3.7%	28.30%	N/A	N/A	N/A	N/A	N/A	N/A
Homeless	Mathematics	96.5%	3.5%	18.28%	N/A	N/A	N/A	N/A	N/A	N/A
Homeless	Science	94.1%	5.9%	N/A	N/A	N/A	N/A	N/A	N/A	N/A
Homeless	Social Studies	94.1%	5.9%	13.17%	N/A	N/A	N/A	N/A	N/A	N/A
Foster Care	ELA	N/A	N/A	27.54%	N/A	N/A	N/A	N/A	N/A	N/A
Foster Care	Mathematics	N/A	N/A	17.90%	N/A	N/A	N/A	N/A	N/A	N/A
Foster Care	Social Studies	N/A	N/A	11.85%	N/A	N/A	N/A	N/A	N/A	N/A
Military Connected	ELA	N/A	N/A	54.39%	N/A	N/A	N/A	N/A	N/A	N/A
Military Connected	Mathematics	N/A	N/A	41.32%	N/A	N/A	N/A	N/A	N/A	N/A
Military Connected	Social Studies	N/A	N/A	30.54%	N/A	N/A	N/A	N/A	N/A	N/A

Annual Education Report Taylor Preparatory High School (01380)

High School Graduation: Four-Year Adjusted Cohort Rate

Student Group	Baseline Data (2016)	Most Recent Results (2018)	Interim Objective (2020)	Interim Objective (2022)	Long-Term Target (2025)
All Students	79.79%	90.74%	86.30%	89.56%	94.44%
Asian	90.77%	<10	92.40%	93.22%	94.44%
Black or African American	67.31%	90.91%	79.37%	85.40%	94.44%
Hispanic of Any Race	72.07%	<10	82.01%	86.99%	94.44%
White	83.48%	87.50%	88.35%	90.79%	94.44%
Economically Disadvantaged	67.48%	88.46%	79.46%	85.46%	94.44%
Students With Disabilities	57.12%	<10	73.71%	82.00%	94.44%

Annual Education Report Taylor Preparatory High School (01380)

Percentage of English Learners Making Progress in Achieving English Language Proficiency

Student Group	Baseline Data (2016)	Most Recent Results (2019)	Interim Objective (2020)	Interim Objective (2022)	Long-Term Target (2025)
English Learners	46.41%	79.41%	52.12%	54.98%	59.26%

Annual Education Report Taylor Preparatory High School (01380)

Accountability Details Attendance Data

Student Group	Statewide	District	School
All Students	80.30%	N/A	65.71%

* All data based on students enrolled for a full academic year.

Annual Education Report Taylor Preparatory High School (01380)

Academic Proficiency

Student Group	Student Group	Baseline Data (2016)	Most Recent Results (2019)	Interim Objective (2020)	Interim Objective (2022)	Long-Term Target (2025)
All Students	ELA	49.14%	48.91%	53.97%	56.38%	60.00%
Economically Disadvantaged	ELA	32.83%	42.11%	44.90%	50.94%	60.00%
English Learners	ELA	22.25%	<10	39.03%	47.42%	60.00%
Students With Disabilities	ELA	18.87%	<10	37.15%	46.29%	60.00%
Black or African American	ELA	23.26%	42.86%	39.59%	47.75%	60.00%
Asian	ELA	70.34%	<10	70.34%	70.34%	60.00%
Hispanic of Any Race	ELA	36.15%	<10	46.75%	52.05%	60.00%
Two or More Races	ELA	46.76%	<10	52.64%	55.59%	60.00%
White	ELA	56.05%	51.22%	57.81%	58.68%	60.00%
All Students	Mathematics	37.55%	30.43%	41.99%	44.22%	47.55%
Economically Disadvantaged	Mathematics	21.92%	28.07%	33.31%	39.01%	47.55%
English Learners	Mathematics	21.04%	<10	32.82%	38.71%	47.55%
Students With Disabilities	Mathematics	15.57%	<10	29.78%	36.89%	47.55%
Black or African American	Mathematics	12.43%	20.00%	28.04%	35.85%	47.55%
Asian	Mathematics	68.19%	<10	68.19%	68.19%	47.55%
Hispanic of Any Race	Mathematics	23.63%	<10	34.26%	39.58%	47.55%
Two or More Races	Mathematics	34.42%	<10	40.26%	43.17%	47.55%
White	Mathematics	43.95%	34.15%	45.55%	46.35%	47.55%

Annual Education Report Taylor Preparatory High School (01380)

Accountability Index Data

School Name	Proficiency Index Value	Growth Index Value	Graduation Rate Index Value	EL Progress Index Value	School Quality/Student Success Index Value	General Participation Index Value	EL Participation Index Value	Overall Index Value	Accountability Status	Reason for Identification
Taylor Preparatory High School	67.12	58.56	95.08	0.00	79.71	97.89	0.00	69.67	N/A	N/A

Annual Education Report Taylor Preparatory High School (01380)

Professional Qualifications of All Public Elementary and Secondary School Teachers

	Other	B.A.	M.A.	P.H.D.
Taylor Preparatory High School (01380)	0	15	11	0

Professional Qualifications are defined by the State and may include information such as the degrees of public school teachers (e.g., percentage of teachers with Bachelors Degrees or Masters Degrees) or the percentage of fully certified teachers

Inexperienced Teachers

	Total Number of Staffing Group	Number Inexperienced	Percent Inexperienced	Count High-Poverty Schools	Percent High-Poverty Schools	Count Low-Poverty Schools	Percent Low-Poverty Schools
Taylor Preparatory High School (01380)	22.47	10.61	47.2%	N/A	N/A	N/A	N/A

Inexperienced Principals and Other School Leaders

	Total Number of Staffing Group	Number Inexperienced	Percent Inexperienced	Count High-Poverty Schools	Percent High-Poverty Schools	Count Low-Poverty Schools	Percent Low-Poverty Schools
Taylor Preparatory High School (01380)	2.41	1.20	49.8%	N/A	N/A	N/A	N/A

Teacher Emergency or Provisional Credentials

	Total Number of Teachers	Number with Emergency or Provisional Credentials	Percent with Emergency or Provisional Credentials	Count High-Poverty Schools	Percent High-Poverty Schools	Count Low-Poverty Schools	Percent Low-Poverty Schools
Taylor Preparatory High School (01380)	22.47	0.20	0.9%	N/A	N/A	N/A	N/A

Out-of-Field Teachers

	Total Number of Teachers	Number of Out-of-Field Teachers	Percent of Out-of-Field Teachers	Count High-Poverty Schools	Percent High-Poverty Schools	Count Low-Poverty Schools	Percent Low-Poverty Schools
Taylor Preparatory High School (01380)	22.47	0.20	0.9%	N/A	N/A	N/A	N/A

Annual Education Report Taylor Preparatory High School (01380)

LEA School Improvement Fund Recipients

District Name	School Name	Type of School	Funds Received	Strategies Implemented
---------------	-------------	----------------	----------------	------------------------

No Data to Display

Annual Education Report Taylor Preparatory High School (01380)
NAEP Grade 4 Math

	Percent of Students	Percent below Basic	Percent Basic	Percent Proficient	Percent Advanced
All Students	100	24	41	29	7
Male	51	22	40	30	8
Female	49	25	42	28	5
National Lunch Program Eligibility	51	36	44	18	2
Eligible	49	12	37	40	11
Not Eligible	‡	‡	‡	‡	‡
Info not available					
Race/Ethnicity					
White	65	15	41	36	8
Black or African American	17	51	39	9	1
Hispanic	9	34	45	17	4
Asian	3	9	32	37	22
Native Hawaiian or Other Pacific Islander	‡	‡	‡	‡	‡
American Indian or Alaska Native	‡	‡	‡	‡	‡
Two or More Races	5	29	42	22	7
Student classified as having a disability	11	60	29	10	1
SD	89	19	42	31	7
Not SD					
Student is an English Language Learner	10	37	46	14	2
ELL	90	22	40	31	7
Not ELL					

‡ Reporting Standards not met. Note: Observed differences are not necessarily statistically significant. Detail may not sum to total because of rounding. SOURCE: U.S. Department of Education. Institute for Education Sciences. National Center for Education Statistics. National Assessment of Educational Progress (NAEP) 2019 Mathematics Achievement.

Regardless of location selected, data are displayed at the state level only.

Annual Education Report Taylor Preparatory High School (01380)
NAEP Grade 8 Math

	Percent of Students	Percent below Basic	Percent Basic	Percent Proficient	Percent Advanced
All Students	32	68	31	9	
Male	51	33	67	31	10
Female	49	31	69	31	7
National Lunch Program Eligibility					
Eligible	4	48	52	16	3
Not Eligible	55	19	81	43	13
Info not available	‡	‡	‡	‡	‡
Race/Ethnicity					
White	70	25	75	37	11
Black or African American	15	64	36	9	1
Hispanic	8	41	59	16	2
Asian	3	14	86	52	21
American Indian or Alaska Native	‡	‡	‡	‡	‡
Native Hawaiian or Other Pacific Islander	‡	‡	‡	‡	‡
Two or More Races	4	39	61	24	4
Student classified as having a disability					
SD	10	75	25	5	0
Not SD	90	27	73	34	9
Student is an English Language Learner					
ELL	6	60	40	8	1
Not ELL	94	30	70	32	9

‡ Reporting Standards not met. NOTE: Observed differences are not necessarily statistically significant. Detail may not sum to total because of rounding. SOURCE: U.S. Department of Education. Institute for Education Sciences. National Center for Education Statistics. National Assessment of Educational Progress (NAEP) 2019 Mathematics Achievement.

Regardless of location selected, data are displayed at the state level only.

Annual Education Report Taylor Preparatory High School (01380)
NAEP Grade 4 Reading

	Percent of Students	Percent below Basic	Percent Basic	Percent Proficient	Percent Advanced
All Students	100	36	64	32	7
Male	51	40	60	28	6
Female	49	32	68	36	9
National Lunch Program Eligibility					
Eligible	53	49	51	20	3
Not Eligible	47	21	79	45	13
Info not available	‡	‡	‡	‡	‡
Race/Ethnicity					
White	65	29	71	37	9
Black or African American	18	58	42	15	2
Hispanic	9	50	50	18	2
Asian	3	18	82	44	15
American Indian or Alaska Native	‡	‡	‡	‡	‡
Native Hawaiian or Other Pacific Islander	‡	‡	‡	‡	‡
Two or More Races	5	33	67	35	8
Student classified as having a disability					
SD	10	74	26	10	1
Not SD	90	31	69	34	8
Student is an English Language Learner					
ELL	11	57	43	14	3
Not ELL	89	33	67	34	8

Rounds to zero

‡ Reporting Standards not met. NOTE: Observed differences are not necessarily statistically significant. Detail may not sum to total because of rounding. SOURCE: U.S. Department of Education, Institute of Education Sciences, National Center for Education Statistics, National Assessment of Educational Progress (NAEP), 2019 Reading Assessment.

Regardless of location selected, data are displayed at the state level only.

Annual Education Report Taylor Preparatory High School (01380)
NAEP Grade 8 Reading

	Percent of Students	Percent below Basic	Percent Basic	Percent Proficient	Percent Advanced
All Students	100	27	73	31	3
Male	51	32	68	26	2
Female	49	21	79	37	3
National Lunch Program Eligibility					
Eligible	47	39	61	19	1
Not Eligible	52	15	85	43	4
Info not available	‡	‡	‡	‡	‡
Race/Ethnicity					
White	70	22	78	35	3
Black or African American	15	48	52	12	0
Hispanic	8	36	64	22	1
Asian/Native Hawaiian or Pacific Islander	3	14	86	56	6
American Indian or Alaska Native	‡	‡	‡	‡	‡
Two or More Races	‡	‡	‡	‡	‡
Islander	4	23	77	40	5
Student classified as having a disability					
SD	11	71	29	5	0
Not SD	89	21	79	35	3
Student is an English Language Learner					
ELL	6	57	43	6	0
Not ELL	94	25	75	33	3

Rounds to zero

‡ Reporting Standards not met. NOTE: Observed differences are not necessarily statistically significant. Detail may not sum to total because of rounding. SOURCE: U.S. Department of Education, Institute of Education Sciences, National Center for Education Statistics, National Assessment of Educational Progress (NAEP), 2019 Reading Assessment.

Regardless of location selected, data are displayed at the state level only.

Annual Education Report Taylor Preparatory High School (01380)

NAEP Participation Data

Grade	Subject	Participation Rate for Students with Disabilities	Standard Error	Participation Rate for Limited English Proficient Students	Standard Error
4	Math	86.9	2.25	97	0.97
	Reading	85.4	2.57	98	1.04
8	Math	81.9	2.48	95	1.79
	Reading	83.3	2.41	91	3.97

The National Assessment of Educational Progress (NAEP) is periodically administered by the U.S. Department of Education based on assessments administered to samples of students in each state. Federal regulations require the display of state level NAEP data on the Annual Education Report. These data represent the performance of the most recent sample of Michigan students on the NAEP.